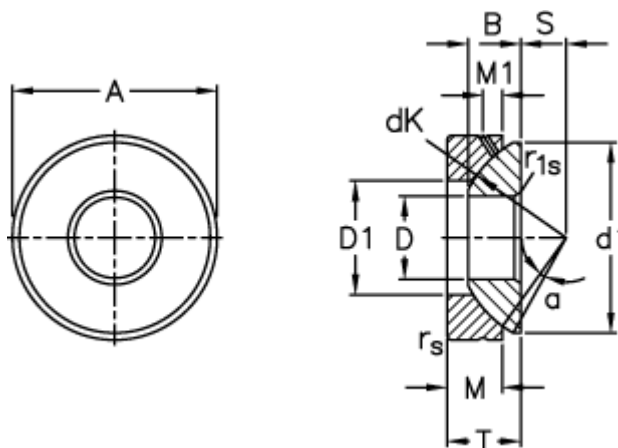


Article number: 03511060

Description: Fluro Rod end GE 60AX

Measures



A	= 150 0 -0,018	M1	= 12.5
B	= 37	rs, r1s min	= 1
D	= 60 0 -0,015	S	= 35
d1 max	= 140	Static axial load C0 (kN)	= 3650
D1 min	= 84	T	= 45 +0,25 -0,50
dK	= 160	Tilt angle	= 6
Dynamic axial load C (kN)	= 733	Weight	= 4630
M	= 34		